

Q1 2023

January, February & March

Date of issue: 6th April 2023



SUTTLES STANDARD

Raising the standards in safety, health, environment and quality | To contribute please email marketing@suttles.co.uk

The Suttles 'Community Fund' is here to help



Did you know that here at Suttles we have a community fund? Made up of a committee of 5 people from Suttles Projects and Suttles Stone Quarries, they meet bi-monthly to discuss any charity or sponsorship requests that we receive from within Suttles and the local community. You will have read about some of the causes we support from reading this newsletter. We have supported marathon runners, bike rides & running challenges, as well as community lead and green initiatives. Here are some of the initiatives we help that you may not know about.

by doing charity swims, he swam an incredible 65 miles (in one go!) around the Isle of Wight, and is currently preparing to swim around the Grecian island, Ithica. All to raise money and awareness in his fight against plastic. We have given him some 1 tonne bags that he can use to store the plastic he recovers. He does regular beach cleans (practically every day!) so if you ever want to get involved, you'll often find him at Chapman's Poole on a Saturday.

Another local initiative we are proud to support is the Wareham & Sandford Community Fridge. Run by Mel, she works with local shops and businesses to collect food waste which would otherwise be thrown away, despite being in date. She then displays it like a mini supermarket in 'Not Just Sundaes' community cafe in Wareham for local people to help themselves to what they need. We are helping with maintenance of appliances and



Oly Rush & Project Planet. Have you had a day at the seaside and noticed how much plastic waste lies around you? Oly dedicates all of his time to clearing the Isle of Purbeck from plastic waste. He has raised money



a financial contribution to help with the day to day running costs.

We are also supporting Frank Roberts, a Swanage resident who dedicates his time to keeping Purbeck tidy. He has help from other volunteers, including



Litter Free Purbeck, and Swanage Army Link, he himself is an army veteran, having had a long career in the armed forces and this is how he is spending his retirement. He is a well known figure in Swanage for the tremendous work he does, and we are happy to be able to contribute to his running costs which almost entirely come from his pension.

There's so much more to talk about that we can't fit in this newsletter, but we look forward to keeping you updated in future newsletters. If you know of any local causes you think may be of interest, please email them to marketing@suttles.co.uk

Jubilee Celebration

Tree

Last year we pledged to sponsor an oak tree in honour of the Queen's Platinum Jubilee.

The tree was planted at the beginning of this year and marked with a ceremony, made more poignant by the Queens passing.



Director Matt Suttle with a representative from Corfe Castle Parish Council

The ceremony was attended by Matt Suttle and Sue Marshall.



The plaque on the enclosure of the Jubilee Tree

Lee Westwood Marathon

In April, site operative Lee Westwood is going to be running the Brighton Marathon!



Lee is running the marathon to raise money for Tommy's charity. 'As many of you will know, Sophie and I have had a tough couple of years and have struggled with recurrent miscarriage. Tommys charity has been an amazing resource and has helped so many people on their journeys to starting/growing their family.'

Tommy's exists to support, care for and champion people, no matter where they may be on their pregnancy journey. They are the largest charity in the uk carrying out research into the causes of miscarriage, stillbirth and premature birth.

If you would like to sponsor Lee you can find his Just giving page by scanning this QR code on your phone:



Vouchers

Ben Daniels has been rewarded vouchers for reporting a close call and taking action to prevent what could have been a major incident.



When moving the PC490 from Dawkins Road to HS2 through a transport company, it was identified that the two tyre walls were touching on the trucks rear axle with the trailer loaded.

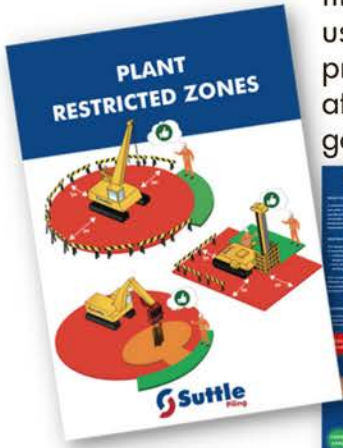
The driver was under pressure from his office to transport the load despite the drivers obvious hesitations, with a max load of 44,000kg on his fifth wheel the onboard loader was also reading 50,000kg. The tyres rubbing in this way would mean an increase in heat and rubbing, potentially resulting in a blowout, the results of which could have been very dangerous indeed.

Ben made the call to remove the PC490 from the trailer and to source transport from elsewhere.

Piling Poster Initiative

Suttles Projects have created and produced A0 boards and A5 booklets to be used as a training tool & reminder for training already given to our team, and to have placed on sites to help other companies better understand our processes. The

first of these boards has been used at HS2 and having proved successful will feature at more of our piling sites going forward.



Sustainable Award Success!



We are delighted to have received our 'Level 3 Sustainable Business Award' from Litter Free Dorset!

So, who are Litter Free Dorset and what does that mean?

Litter Free Dorset – Land, Coast and Sea is a strategic approach to creating better quality local environments for everyone in Dorset, exploring and realising the

social, economic and environmental benefits of reducing the impacts of litter in the county's towns, beaches and open spaces.

Their aim with the Sustainable Business Network is to transform the plastic footprint of Dorset based business, retail, leisure and tourism through encouraging businesses to consider ways to become more sustainable and further limit their impact on the environment.

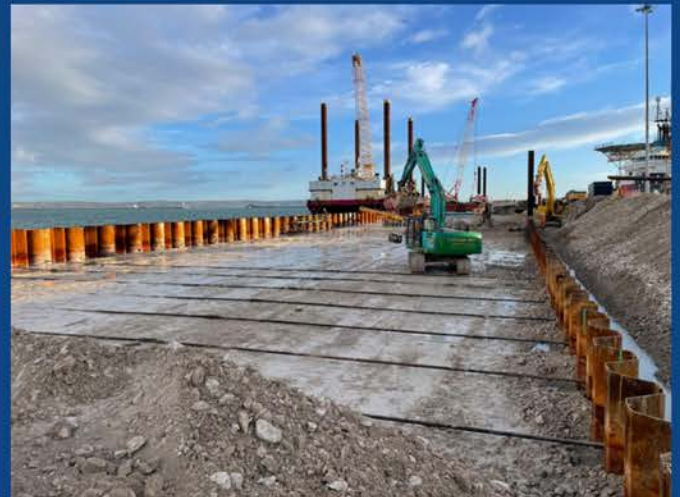
Every business that wishes to take part has to start with the plastic category, level 1. You can then move up through the levels by making changes to reduce, reuse and recycle, with level 5 being the highest you can achieve.

As part of our pledge our Swanworth Quarry Office will be a refill point, for walkers and passers by to refill their water bottles and hopefully help to cut down on the number of disposable water bottles washing up on our beaches. Keep an eye out on the refill app for when this will happen!

Project Spotlight

Portland Deep Water Berth

Portland Port are redeveloping the existing "Deep Water Berth". The works involve demolishing the existing pier structure before piling and infilling to create a new & bigger solid quay structure.



The aim of this redevelopment is to accommodate the growth of Portland Port's cruise and cargo handling operations along with continued service provision to vessels including those from the Royal Fleet Auxiliary and Royal Navy.

Suttles Projects have installed the sheet piling using our 50 tonne Komatsu PC490 with Movax SG75V attachment and DH25 impact hammer and also carried out the installation of Anker Schroeder tie rods and a fabricated water system. Works were carried out over the course of 4 months, working collaboratively with the client to ensure the works were carried out ahead of programme.

MPA Awards

The 19th January saw the Mineral Product Association Health & Safety Awards

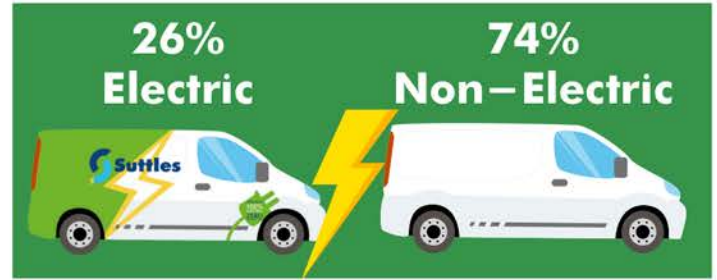
Last year we entered our 'Have they seen you?' signs from our Mannings Heath Road Depot for an award.



Andy McCuish and Ben Herbert with the certificate

These are fixed signs that are on the entrance to the yard and on the back of our loading shovels to remind customers not to get too close when the shovels are moving around the yard and reversing as they can't always see you.

Although we weren't able to attend the awards ceremony in person, we were honoured to receive a 'highly commended' certificate, as seen below with Ben and our Mannings Heath Depot manager Andy. Well done team!



We are also waiting on delivery of some more fully electric vehicles which have been purchased. As they haven't yet arrived, they are not included in these figures.

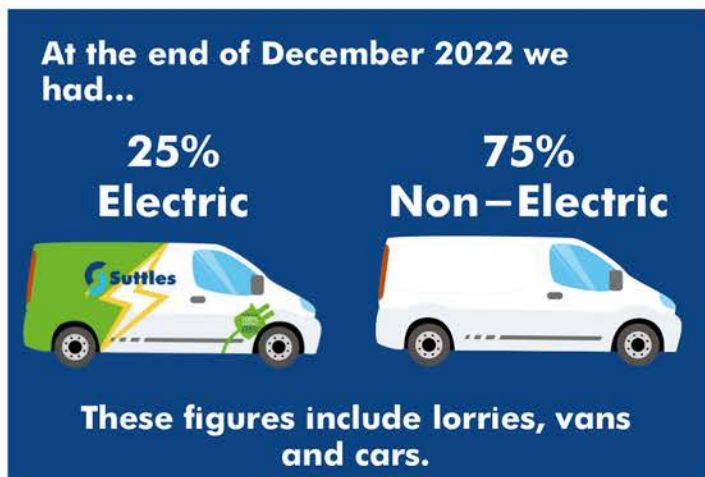
Audits

February: Suttle Projects and J.Suttle Transport have passed their annual FORS Silver audit. J.Suttle Transport have also passed their FORS



Bronze which takes place every 2 years.

Electric Vehicle Update!



Over the past three months since we last updated you, we have again increased our fleet of electric vehicles!

It may only be by 1%, but these figures are slightly skewed as we actually increased our EV's by more than 1%, but we exchanged one hybrid vehicle for a fully electric EV.

At the beginning of March Suttle Projects passed their ISO 45001, 14001 and 9001 audits. The ISO audits are based on occupational health and safety, environment and quality. They passed with no minor non-conformities.



At the end of March Suttle Projects passed their RISQS audit; Rail Industry Supplier Qualification Scheme.



How much do you know about our Mannings Heath Depot?

Our Mannings Heath Depot is situated in the busy area of Tower Park, just outside of Poole and on the way to Bournemouth and Christchurch. Perfectly placed as an easily accessible option to customers wanting stone and building materials on the Dorset/Hampshire border.



It's not just stone and building aggregates, we also sell sleepers, available in treated softwood and treated hardwood, they are perfect for use in garden renovations, whether it's for decorative purposes (softwood) or area which require more strength and resilience (hardwood).

Our Mannings Heath Depot is open Monday - Friday, 6:45am - 16:45pm and on Saturday mornings from 6:45am - 11:45am.

As well as being a stone depot, it is also our recycling yard. All tipped materials are processed here ready to become new recycled materials that are used for many different applications.

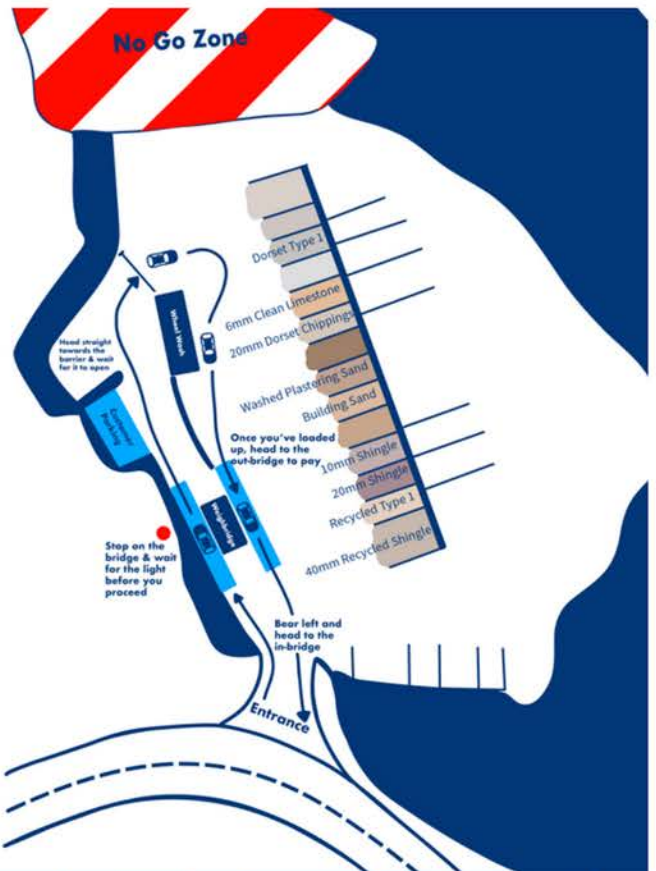
We accept tipping of Concrete, Rubble and Hardcore, we then process it on site, including picking out anything that shouldn't be in there including metal & plastics. What's left is then crushed to produce a Recycled 6F5 and a Recycled Type 1, both then sold to the local construction market.



Russ loading the crusher



Terry picking



A map of our MHR Depot that is currently in progress which will be used as a visual aid for customers



CROSSWORD COMPETITION

ACROSS

- Name of the recent Audit
- Who ran the Brighton Marathon?
- The 'M' in MPA
- How many babies?
- Surname of vouchers recipient

DOWN

- Location of the Deep Water Berth
- Combined years of service for anniversaries
- Sandford and Wareham Community _____
- Dedicates his time to clearing plastic from the ocean

Once you have completed the crossword the letters in the green boxes will form an anagram of the name of one of a coastal town on the south coast.
 Work out the name and email it to Georgina (marketing@suttles.co.uk) or text/whatsapp it to 07979 318397 all correct answers will go into a draw to win a £25 voucher!

longest serving lorry driver and has been with us for 25 years.

Congratulations both! And thank you for the last 25 years.

Here's a couple of blasts from the past! We're sure you'll agree that they haven't really changed!



Employee News

There have been 2 significant anniversaries this quarter!

Firstly, Suttle Stone Quarries director, Sue Marshall celebrated 25 years! Sue came to Suttles as an 18 year old, in what she thought would be a temporary job whilst she worked out what she wanted to do. Well, we think she figured it out! Because 25 years later, she's still here and part of the fabric of what makes Suttles what it is today.

Secondly, James Drane aka Rod. James is our



James Drane



Sue Marshall

New Arrivals



Stevie Heynes

Adam Heynes (Commercial Manager for Projects) and his wife Ellie welcomed little Stevie into the world on Valentine's Day weighing 8lbs 1oz. Her favourite activities are sleeping, feeding, having a bath and staring at the wall.

Congratulations Adam and Ellie!

On the 19th March, Mannings Heath Manager Andy McCuish and his fiancé Pheobe welcomed Madison into the world, weighing 8lbs 2oz, she is pictured with her doting big sister Margot.



Madison Timmie McCuish



Close Calls over the last 3 months

Top Close Calls

Utility survey provided by the client was not accurate, additional cables and drainage was discovered during excavation.

Remote monitored security camera picked up intruder to site on Saturday night.

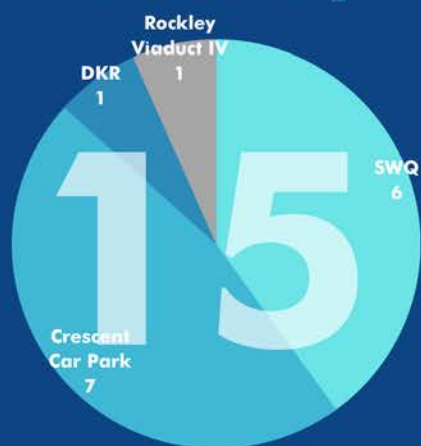
A transport supplier had to move our PC490 digger from DKR to HS2. Two tyre walls were touching on the truck's rear axle with the trailer loaded. The driver was under pressure from his office to transport the load despite the driver's obvious hesitations, the tyres rubbing in this way would mean an increase in heat and rubbing potentially resulting in a blowout, the results of which could have been very dangerous indeed.

Month	Total Number of Close Calls	Total Number of People Raising Close Calls
January	15	6
February	19	8
March	16	11



Total Close Calls and Number Per Site:

January



February



March



Accident Alert – Suttle Stone Quarries

Where did the accident happen?

Swanworth Workshop - A lorry was in the workshop to investigate an exhaust leak. The cab had been tilted forward, with the doors closed, to allow access into the engine bay. One fitter was by the engine and asked the second fitter to start the truck so the leak could be located.

What happened?

The fitter bought over a set of steps and placed them adjacent to the cab. By standing on the bottom step he was able to reach up and release the catch. He stepped off the step onto the floor but then lost control of door which swung down and caught him on his left shoulder.



He suffered bruising to his shoulder. Later in the day due to pain in his left hand he visited hospital where after an Xray it was found that he had broken a bone in his thumb. He is likely to be off work for at least 6 weeks.

The Investigation

This is a task that is performed almost daily and has been done so for many years.

It is unclear at this stage as to why the fitter lost control of the door on this occasion causing it to fall suddenly.

The investigation is on-going with enquiries being made outside of the business as to how this task is performed elsewhere and if anything different can be done.



SHEQ Calendar FORS Driver Fitness



Holding silver accreditation in FORS (Fleet Operator Recognition Scheme) helps Suttles to demonstrate that we employ good practice and comply with the requirements to managing road risk.

As part of that compliance, we need to ensure that the fitness and health of our drivers is correctly managed so that Suttles can achieve an improved safety record, reduce the opportunity for unintentional breaches of the company vehicle policy, reduce the likelihood of collisions and have fewer drivers receiving fines and penalty points.

Fitness can be affected by a number of things:

Fatigue:

RoSPA has found that fatigue related accidents kill over 300 people a year in the UK and cause 20% of accidents, particularly on monotonous roads.

Eyesight:

Your eyesight must be good enough to read a number plate at a distance of 20m. If you need glasses or contact lenses to meet the Highway Code's minimum vision standard, make sure you wear them all the time you are driving.

Alcohol and Drugs:

(over the counter, prescription or illicit substances)
A driver with a Blood Alcohol Concentration level of .05 is twice as likely to be involved in a crash. Every year, about 90,000 people are convicted of drinking and driving. In addition, one in five people convicted of drink driving are caught the following morning.

Medical Conditions:

colds, migraines, stomach upsets, hay fever.

Daily Stress Events:

as driving is stressful, you need to be able to recognise when you are under too much stress. There are a few symptoms that can help you identify stress and if you experience any of the following then you should seek medical advice immediately. Symptoms may include: chest pains, headaches, pins and needles, tendency to sweat, sleeping problems, lack of appetite, craving for food.

If you unwell ask your doctor if your condition will affect your driving. If it does you need to tell us and the DVLA.



April is 'Stress Awareness Month' so look out for a stress assessment survey coming via Reflow for completion