

Suttle Standard

Raising the standards in safety, health, environment and quality | newsletter@suttles.co.uk



Web: www.suttles.co.uk
 Tel: 01929 439444

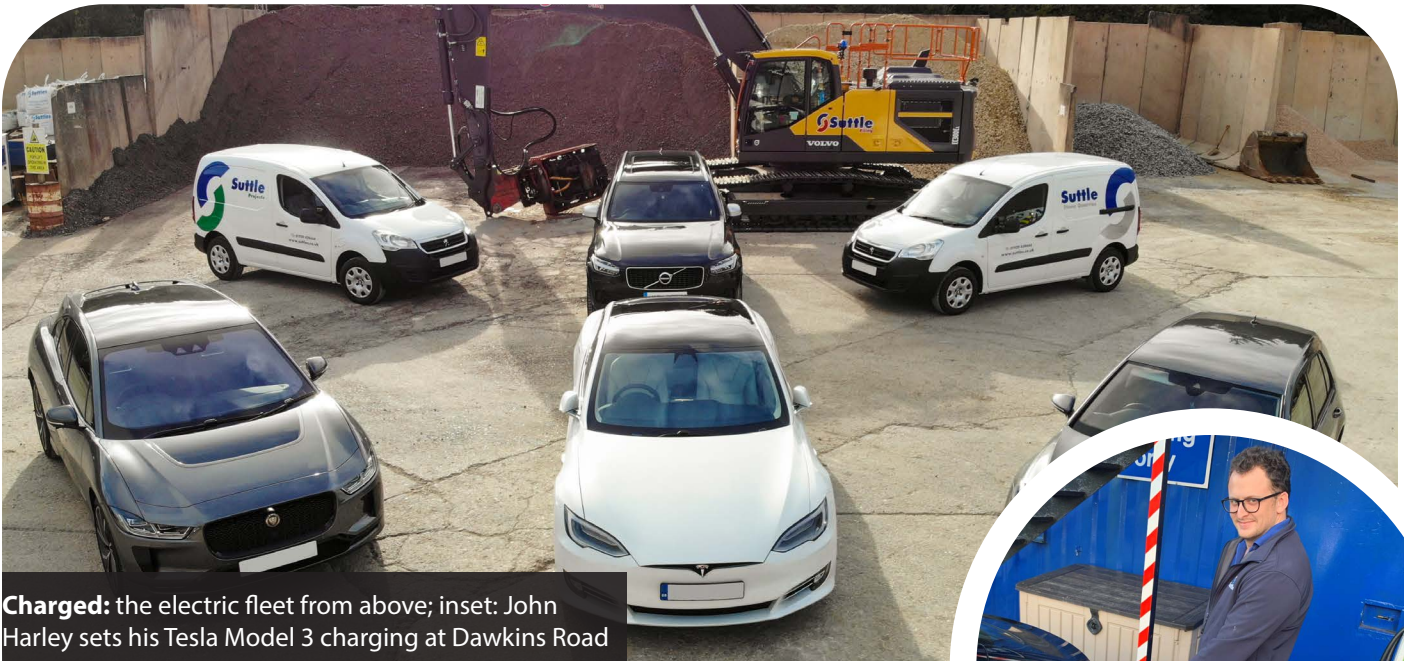


Twitter.com/Suttle_Stone
 and /Suttle_Projects



Facebook.com/SuttleProjects
 and /SuttleStoneQuarries

Suttles' Sustainability Drive



Charged: the electric fleet from above; inset: John Harley sets his Tesla Model 3 charging at Dawkins Road

New Electric Vehicles and Swanworth Solar System

have invested in do herald a new benchmark for (Cont'd [p3](#))



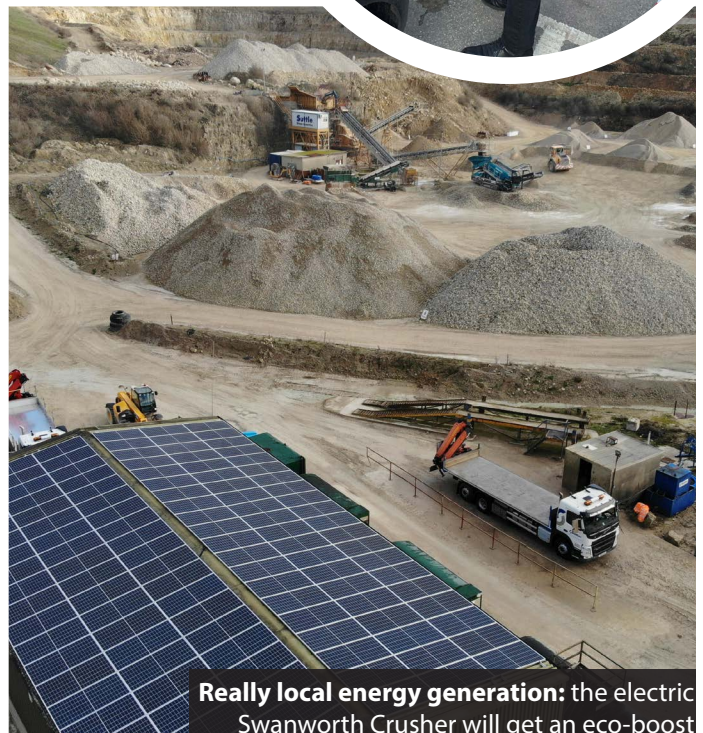
Suttles is saving tonnes of CO₂ emissions a year after adopting electric vehicles into its fleet.

A total of 13 electric and hybrid vehicles have been purchased over the past year, with plans to extend this further in 2020.

Included in this number are seven fully electric vehicles (EV's) from brands such as **Tesla**, **Jaguar**, **Volkswagen** and **Peugeot** with another being purchased at the end of this year, as well as five plug-in hybrids (PHEV) and one regenerative hybrid. The newest additions are two fully electric Peugeot vans which will reduce their emissions in the Poole area.


These vehicles combined are estimated to be saving around 30 tonnes of CO₂ and 218kg of NOx emissions per annum compared to the petrol and diesel vehicles they have replaced.

Operations Director, **John Suttle**, said: "My experience tells me that the cars and vans that we



Really local energy generation: the electric Swanworth Crusher will get an eco-boost

Mental Health Matters

In this edition of the **Suttle Standard**, we concentrate on the theme of mental health awareness. Matters of mental health directly or indirectly affect us all, and everyone we know in various ways. There is a particular focus on our health and safety pages this issue, as we look at the story of **Will Paddy** encapsulated through the **#Willdoes** charity, World Suicide prevention day, our new mental health champion, and our efforts to provide mental health first aid training. We feel there are some urgently important messages to get across that can be especially poignant at this, a time of year that can be very tough for some people. If you are in need of support at any time, the most important step is to open up to someone and we now have a team of mental health first aiders who can help to set staff in need on a path to getting expert help. Elsewhere in this issue, we talk about our first contract working directly for **Network Rail** as a Principal Contractor and our lead story extensive low carbon commitments in the form of 10+ new electric vehicles and a 120 panel solar array at Swanworth. 



Langport from above: **Projects'** major embankment scheme (p3)

CONTENTS



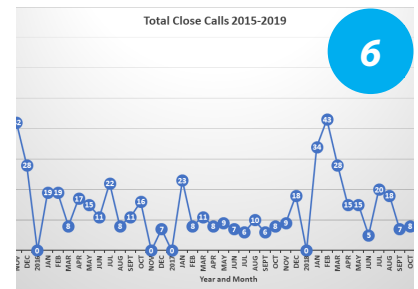
Making Sweet Music

An electronic duo sampled Swanworth's quarry sounds



Know Your Colleague

Who came 599th out of 600 entrants in a triathlon?



Health and safety

Mental health, alerts and more

Editorial team

Editorial and design - Adam Parker
Additional content - Abbi Marshall,
Tracey Paine, John Suttle

Suttles is J Suttle Transport Ltd and Suttle Projects Ltd. www.suttles.co.uk

Stone experts and civil engineers. Buy straight from source or commission us for complex projects.

Registered office: Swanworth Quarry, Worth Matravers, Swanage, Dorset, BH19 3LE.



Designed by Adam in Swanworth Quarry

Suttles' Sustainability Drive (continued from front)

transportation in terms of their reduced impact on the environment and health, but also safety. I think that modified driving techniques in terms of maximising range and regeneration and taking charge breaks will, in time, lead to less accidents."

With the recent growth of the Suttles Group, they continually strive to minimise any negative impact they may have on the environment and this year saw **Suttles** accredited to ISO standards, a huge achievement meaning the company meets in-

ternationally recognised standards for its environmental management systems. Further recognition of the drive to continually improve on emissions reductions came from FORS (Fleet Operator Recognition Scheme) with renewal of the companies' Silver accreditation.

Mr Suttle added: "Personally I've long been an advocate of the view that on a very basic level, humans could and should be generating and using energy more efficiently. As a business I think we've been making more progress in this regard since we obtained Swanworth Quarry in 2011. The difference we can make right now is limited but

we aren't finished just yet."

Swanworth Solar Installation

IN A bid to reduce the company's carbon footprint and energy costs, Swanworth Quarry's workshop has recently undergone installation of photo-voltaic solar panel system supported by **Low Carbon Dorset** and **Wessex Eco Energy**.

Throughout the year when solar radiation is produced (not just in bright sunlight), the panels will generate electricity to provide power for the workshop, security and any fixed electrical systems within the quarry. Importantly it will also help to power our 160kW crusher motor which was upgraded to electric from diesel back in 2014, significantly reducing our bills and some of our reliance of fossil fuel energy sources.

The system, which has a capacity of around 50kWp, has been part funded by Low Carbon Dorset as part of the **European Regional Development Fund (ERDF)** and will save around 25 tonnes of CO² per year. This along with our ever-increasing fleet of electric and hybrid vehicles we are estimated to be saving in the region of 60 tonnes of CO² emissions combined.

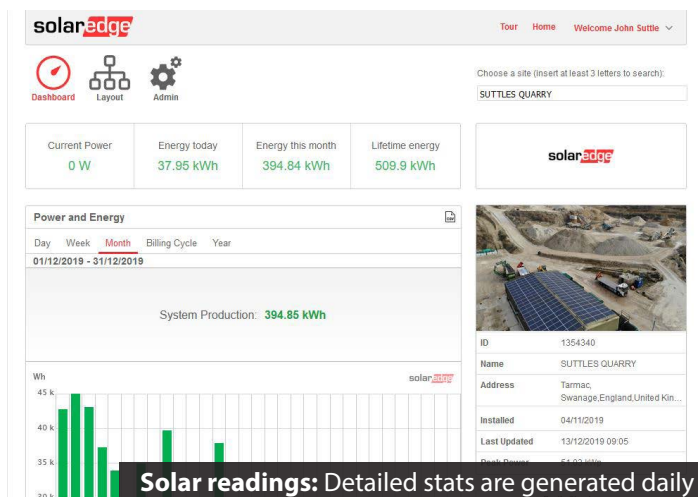
Suttle Stone Quarries have been working

hard since June to be approved for the grant from Low Carbon Dorset which included numerous site visits from their Renewable Energy Technical Officer, **Dr Derek Moss**. Once the application and suitability process was completed a rigorous selection process was followed with criteria including cost, quality and supplier competence. Once the grant was awarded, we were able to instruct Wessex Eco Energy to complete the works and in October, over the course of a week, 120 Canadian Solar 405w PV panels were expertly and neatly installed to our workshop roof.

With more certainty about a future at Swanworth Quarry in the coming years, Suttles hope to extend to a larger solar system that could entirely power activities on site and give scope to charge more electric vehicles. Nonetheless, after a lot of research and determination a low carbon vision is slowly becoming a reality and Suttles aim to roll out such technologies throughout other parts of the business.

Langport Embankment Principal Contractor for Network Rail

Projects have been awarded a major railway embankment stabilisation scheme (cont'd p4)



by **Network Rail** (NR).

The scheme at Langport, Somerset, which lies between Taunton and Glastonbury, consists of benching the embankment slope, installation of a king sheet pile wall at mid slope with piles up to 23m, backfilled with Class 6N and Class 1A material, installation of soil anchors, installation of capping beam and handrail, and temporary haul roads and piling platforms.

There was an extensive tendering process including pre-qualification demonstrating existing piling existence in a railway environment, a mid-tender presentation to NR's project team, and a detailed quality submission.

Technical director, **Alistair Maidman**, said: "The award of this project represents the culmination of years of hard-won skills and experience that now enable us to work for such a prestigious client, in what is the highest tier of civil engineering contracting. It feels as though we've finally arrived. We welcome and relish the challenge that is to come. I would like to thank everyone involved in securing this project and have every confidence in the team that has been assembled to deliver."

CECA Annual Luncheon

FALKLANDS War hero



CECA Lunch: (l-r) Joe Paine, Tracey Paine, Matt Suttle, Abbi Marshall, Ricardo Leite and John Suttle

Simon Weston CBE

was the guest speaker at the Civil Engineering Contractors Association (CECA) lunch held at the Grand Hotel, Torquay in October.

Mr Weston, who sustained severe burn injuries in the conflict, spoke about his life experiences at the networking event, at which up-and-coming young civil engineers were recognised with awards for their achievements.

New Plant For Projects

Projects continue their investment in plant machinery with two new additions to their fleet of excavators - a Volvo EC220EL 2 piece boom and a Volvo EC300EL.

Both machines have a host of safety features including 360° cameras, a boxing ring to protect against falls from height while working on the engine, a device which emits white noise while moving, safe load indicators and the EC220EL 2 piece boom will have a

height and slew restrictor system.

Both excavators will be compatible with our **Movax** piling units and will also be used on our earthworks schemes.

Quarry 'Found Sounds' Album Released

A DUO of veteran electronic musicians captured audio from **Swanworth Quarry** for their latest album.

Toby Marks, who has also performed under the name **Banco de Gaia**, and **Andrew Heath**, visited the quarry last year as part of a project to journey to the

four compass points of mainland UK, sampling interesting sounds as they went.

Mr Heath told the **Suttle Standard**: "Both of us know Swanage and this became our second location because of the chain link ferry that runs across the mouth of Poole Harbour.

"We had already thought to augment the key recordings with anything else we could find in a given area - our thought was that if we only used these sounds it would impart a certain sonic signature to each track. Looking for suitable places around Swa-



New plant: the excavators at DKR

nage, we found out about **Suttles**.

"The guys were absolutely brilliant – so helpful and, let's be honest, having two odd musicians making an even odder request to 'make recordings of the quarry' for a music project was a bit leftfield, but we were given a full tour.

"You would be amazed at just how musical stone cutters, hammers hitting stones and even the reversing alarm of a fork lift truck can be. They are in the track and more."

The recordings feature in their soundscape album called '**Motion**'; and they also made recordings in north Wales, Yorkshire and Norfolk.

As well as touring and playing throughout the country, the duo also played the album from Hungary to Iceland.

"It's interesting to think those sounds have travelled so far," added Mr Heath.

Purbeck's History of Quarrying At ICE

DIRECTOR of Quarrying, **Simon Clabburn**, gave a presentation on quarrying on the Isle of Purbeck for the Institution of Civil Engineers (**ICE**) Poole City Club.

Simon discussed the history and future of Swanworth Quarry at the Scaplens Court Museum



Top team: these junior footballers wear their Suttles shirts with pride



Engaging: Simon Clabburn (top left) talks quarrying at the ICE event in Poole

in Poole in October. After giving a detailed and engaging presentation, Simon held a Q&A session after for people who were interested to find out more about the work of **Suttle Stone Quarries**, and the company's plans to continue moving forward in the future.

dividuals."

Big Night Out

More than 520 people attended the **Big Night Out With Suttles** in October, and earlier this year in April the event hit a record with over 600 people in attendance.

Learning disability charity **People First Forum** said that since Suttles got involved with the events in 2014, they had seen people arrive from as far afield as Weymouth.

People First have been running the events since 2005 themselves but had been (cont'd p8)

Under 7s Footballers Sponsored by Suttles

Suttles are proudly sponsoring the **Lytchett Matravers Wanderers** with their snazzy new kit.

Sales manager, **Dave Penney**, coaches this talented little team every Sunday.

The team plays in the Dorset League, competing against teams from across the county, and while league rules stipulate that game results should not be shared - because it's the 'taking part' that counts - suffice to say, they're doing very well, and are probably the best Under 7s team in the world.

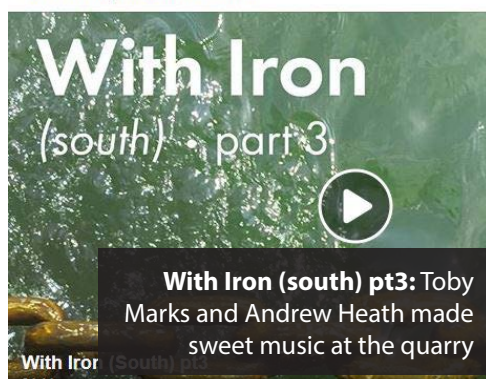
Dave said: "The children have performed way beyond my expectations, and it's great seeing them grow as a team, and as in-



Toby Marks
13 October at 10:31 · 🌐

With Iron (South), Pt. 3 is the fourth and final single off 'Motion'. Andrew Swanage, where we recorded the chain link ferry that crosses the open found sounds at Suttle Stone Quarries.

Stream via <https://smarturl.it/withiron>



With Iron (south) pt3: Toby Marks and Andrew Heath made sweet music at the quarry

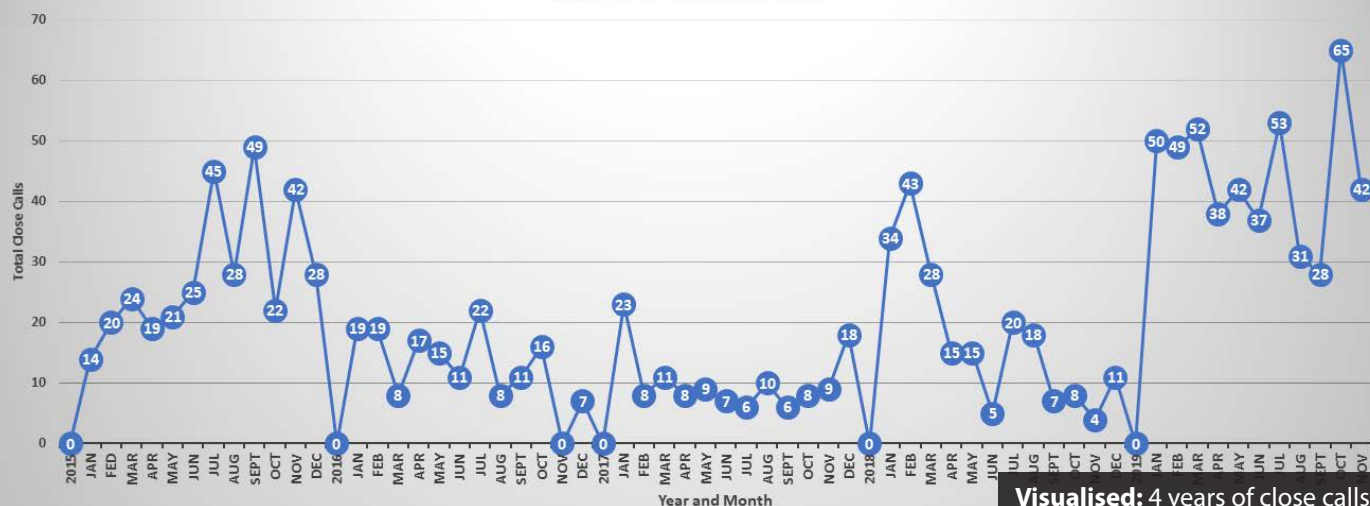
Health & Safety

Suttles

Be proactive.

To report a close call contact closecalls@suttles.co.uk

Total Close Calls 2015-2019



Visualised: 4 years of close calls

Close Calls

Always challenge unsafe acts at the time - don't walk past and ignore - then report.

A detailed breakdown of Close Calls for November is available on [p10](#).

#WillDoes

WillDoes is a charity set up in memory of William Paddy, by his mother, Lesley, to help young people who may be finding life tough and struggling to cope with the everyday.

The organisation offers support and opportunities to teens in need, and aims to help improve and manage anxiety and/or other emotions they may be wrestling with through learning new skills, educating and communica-

tion.

Suttles sponsored five holes in charity golf day - three from **Quarries** and two from **Projects** - and also submitted two teams to play the day's golf event.

The day raised a tremendous £10,500 for WillDoes.

Mental Health Champion

Steph Lamb is the Suttles group's mental health champion. She has undertaken training and is available for people to talk to, if they feel they need it, and can offer advice on the next steps for getting access to professional treatment and advice.

There is a huge focus on mental health now as for many years it has not been recognised by people as something

to talk about. If you are wanting help with your own mental health, the **NHS** has now created a plan with **Every Mind Matters**. This is where you can go onto their website and create a unique plan to boost your mood, improve your self and deal with any stress and anxiety you have.

For more information visit www.nhs.uk/oneyou/every-mind-matters

Email Steph at steph.lamb@suttles.co.uk or call 07733 617408.

Close Call Alert: Failure To Isolate

At Mannings Heath Depot, crushed con-



Failure to isolate: the picker was still active

crete is produced by using a jaw crusher which feeds material into the hopper of the Track-stack picking station (pictured).

On December 3rd, production stopped at lunch break as usual. When the crusher operator - who was delayed after lunch break - had finished, the contract picker decided to climb into the hopper and clean down the inside of the hopper.

The operator returned to start crushing again and started the trackstack first - this included the conveyor that runs through the bottom of the hopper. He then walked past the hopper at which time the picker called to him to tell him he was still in the hopper.

Very luckily the picker was standing on the hopper internal metal frame, not the conveyor belt, when it started to move.

A detailed incident investigation has been completed (available to all). In summary:

- The fundamental reason for the 'Close Call' was that the picker had not received detailed instruction in the site isolation procedure.

- Other factors included:

- o *Keys being left in machinery;*

- o *Misunderstanding in communications between persons on site, both face to face and via radios;*

- o *The picker not having his own radio;*

- o *The picker has completed this task previously - in those situations the crusher operator had been present and had isolated the equipment for the picker.*

Injury Accident at Swanworth Workshop

While cutting a piece of hardox plate from a larger piece, Jimmy moved to the side to cut the last length so he was out of the way when the cut piece fell to the ground.

However, the cut plate hit the concrete

floor and 'bounced' sideways into his shin, causing a cut to his leg that required a hospital visit and 13 stitches.

This is a task that is completed frequently without incident.

The plate was at waist height which gives the best upright position to hold the angle grinder securely when cutting. Bending or crouching to cut the plate closer to the floor has a higher risk level.

Often, when cutting sheet metal, a second person is tasked with holding the sheet just as the last cut is made - this didn't occur on this occasion.

Learning outcomes:

- Use a second person if safe to do so and assess the weight of the piece being cut / held



- Use a sheet of plywood, conveyor belt or similar laid on the workshop floor to absorb the impact and prevent the 'bounce'

Always assess the risks to include what could happen - even for frequently conducted tasks.

Suttles Setting Standards 2

On January 10th, Suttles Setting Standards will start again at Dawkins Road.

There is a section dedicated to mental health, the human mind and communication.

Every employee will attend the workshops over the course of January - with two sessions a day being held.

The first run of Setting Standards gained praise throughout the business, and organisers and presenters **Liam Tucker, Pablo Sainz** and **Steph Lamb** hope this will continue with round 2.



Sponsors: Suttles supporting Willdoes

Know Your Colleague

Pablo Sainz Undergraduate Engineer Suttles Projects

Pablo Sainz is working at **Suttles** on a year-long placement from the University of Bath. Pablo, who is from Madrid, is studying civil engineering and chose to study in the UK because he considers that here there is more of an opportunity to gain practical experience of the industry. He sorely misses the weather and the food from home,

though.

He is fortunate that one of his good friends from home is also studying at Bath Uni, however this good friend is responsible for dragging him along to the **Hever Castle Triathlon**, in Kent, the UK's second biggest triathlon. **Macmillan Cancer Support** is the official event partner and by taking part, participants raise huge sums of money for this charity.

This was Pablo's first ever triathlon, and his race was classed as the 'Individual Olympic', which involved a 1.5km swim in the Castle Lake and the River Eden, a 40km

cycle and a 10.5km run, both through the Kent countryside. Out of the three, Pablo liked the cycling best as it was less tiring.

Although Pablo played a lot of football at University (and is now part of Suttles' five-a-side team), he didn't do any specific training to prepare for the triathlon, he just turned up and joined in with 600 other participants.

The photo (right) shows Pablo and his friends at the end of the course. Pablo's time was 05:09.26 and he came second from last. His friend came third from last.

Tracey Paine



Big Night Out (Cont'd from p5)

unable to keep them a regular event without Suttles' support - now the Big Night Out runs twice a year, every year!

The charity said: "With Suttles' support, the events have gone from strength to strength.

"The nights take around 20-30 volunteers on the night to run. **Cameo** are brilliant - they support their staff to understand the needs of our members and give us a good price to hire the club. They also put on student prices on the drinks because they know that our members often have a low income."

MHR Cabin Move

Our **Mannings Heath Road** aggregates depot recently ushered in a new era with a brand new weighbridge cabin.

Over just two days, all hands were on deck to swap out the old weighbridge, IT and security sys-

Suttle Standard

tems and move over to the new.

Thanks to **MAC Containers Ltd.**, **Marsh Plant Hire** for the crane hire and lifting operations, **Secure Alarms**, and **Comms UK**, and all of the **Suttles** team who sacrificed their weekends to help.

RICA Small Enterprises Works

Managing director, Joe Paine, recently attended the Rail Industry Contractors Association (RICA) meeting in London, where one of the speakers was the commercial

director of route services for Network Rail.

This director has also been made the new SME champion and as such is seeking views from RICA members on how best to help businesses get more work from the company.

In 2017/18 27% of suppliers were SMEs, which increased to 31% in 2018/19, however the Government wants this percentage to increase to 36% by 2021/22. Focus groups are being set up and the matters that have been highlighted to NR so far in-



Stylish and robust: new gabion tables at The Ship Inn, Swanage



New starters: (clockwise from top left) : Andy McCuish; Ewan Stockwell; Abbi Marshall; Pablo Sainz; Nick Olds; Michael O'Hagan; George Fish

clude the need to create better visibility of future work requirements, the need to engage with the supply chain early in the process to get the benefit from early contractor advice and the need to make procurement processes and contract requirements more SME appropriate.

Gabion Tables at Swanage

Swanworth Quarry supplied 100-200mm Gabion Limestone to create unique tables outside a local pub (pictured, [p8](#)).

The Ship Inn at Swanage is the second public house in the town (after **East Bar**) to install these custom-made tables, which look great. As well as being stylish appearance, with the site's strong winds and salty sea front air, these tables are sure to stay robustly in place and in great condition for many years to come.

New Starters

(New starters pictured, [p9](#).)

Abbi Marshall joined **Suttles**
Suttle Standard

in September as the social media and marketing assistant.

Abbi said: "I hope my role can help to promote Suttles internally, to existing and potential customers with regular updates on what Suttles achieve whether it be an extensive Projects job, a staff member milestone or small order for local site, be it through press releases, social media or the newsletters."

Michael O'Hagan joined **Projects** in July, and is on a 12-month placement. He has completed the first two years of his degree in civil engineering at Bath University.

After his placement with Suttles, he will return to Bath to complete his degree and intends to complete a Masters degree in civil engineering. One of the major projects Michael has worked on so far is at Long Curtain Moat, where he was involved in the tender process, as well as being on site three days a week to monitor progress.

Nick Olds returned to **Projects**

as a graduate engineer at the beginning of September, having finished his Master's degree in civil engineering at the University of Bath earlier this year.

He previously completed a placement, year-in-industry with Suttles as a part of his University studies in 2016/17.

Nick said : "It is great to be back and to get stuck in with numerous exciting projects such as the Port of Poole and the design of the bridge for the proposed Swanworth Quarry extension.

"I believe that Suttles' varied and interesting work and ICE graduate training scheme make working at the company the perfect way to develop within the industry and build on my skills as a civil engineer beyond those learnt as a part of my degree."

Pablo Sainz joined **Projects** in July and is on an industrial placement year as part of his civil engineering degree.

After his placement he intends to continue his (cont'd [p11](#))

Close Calls November 2019 - 21

There were a 21 number close calls for November, the top reporting site was Dawkins Road & Swanworth Quarry with 7 each. Highlights for the month include:

- Keys left in the ignition of a vehicle on site, it is important to take keys out of vehicles when not in use not just for theft but as part of our Terrorism & Security policy
- Two contractors working on roof installing solar panels not clipped on - in breach of their RAMS, we all have a duty to stop works on our sites if we deem them to be unsafe. In this case it was recognised and stopped
- Management using phone around the yard, remember to go into a position of safety when using a phone. 31 people were killed in 2018 after being struck by a vehicle whilst at work
- Fuel being stored in the welfare, remember to have COSHH stores on site for the storage of fuels.
- Lorry idling on weighbridge, as per our anti idling policy:
 1. Don't leave an unattended vehicle's engine running
 2. Don't leave the engine running in the depot
 3. Don't leave the engine running when you are parked up, or when you're on a break
 4. Don't leave the engine running during loading and unloading
 5. Cab heaters are provided for cold starts and defrosting – use them!
 6. If you anticipate being stationary for more than one minute then switch off your engine

as soon as you are stopped

The most common time for reporting was between 8am-12 noon.

33% of close calls were deemed as high risk, with 23% risk to property/plant.

Liam Tucker

Top Scores by site	Score
DKR	7
SWQ	7
MHR	2
Palmers Brewery	2
Newbury	1
Ashton Sewer	1
Plumpton Embankment	1
November Total	21

Close Calls by Category	Score
PPE	7
Other	5
Equipment	4
Slip/Trip Hazard	2
Fall of Material	1
Fall of Person	1
Movement of Plant	1
November Total	21



Terrorism Risk and Security Policy

Contents

Policy Statement

Management Procedures

in Risk and Security Policy

19

Terrorism and Security:
keys must be taken out of
vehicles when not in use



New Starters (cont'd from p9)

studies and complete an MEng programme. In the office he has assisted with bearing piles and retaining wall design. He has also helped Alistair Maidman with tender take-offs and sending enquiries for material prices. Pablo also assists on site by carrying out bridge monitoring, setting-out and topological survey tasks.

George Fish recently joined **Projects** to complete his SHE apprenticeship. George is attending the PETA training centre in Portsmouth one day a week to study level 3 Safety, Health and Environment, and his aim is to continue working with the company and towards getting a chartered IOSH membership.

Ewan Stockwell joined **Quarries** after completing his three-year engineering and geology degree at the **Camborne School of Mines**.

Ewan is on a seven month placement, after which he is due to return to Camborne to complete his Master's degree.

Andy McCuish recently joined Mannings Heath Depot as a trainee manager.

He has learned about the operation of mobile plant at Swanworth Quarry before moving on to other areas within the business.

Andy said: "I'm looking forward to getting stuck into my new role and feel that joining the company will open many possibilities for me to grow in the future."

Russ' Good Deed

A PLANT operative was rewarded after his courteous driving behaviour was praised by a member of the public.

Russ Bartlett, who started at **Swanworth Quarry** last year, was

on his way home when he saw a car had broken down on the fast lane on the other side of the dual carriageway on the notorious Dorset Way.

Russ turned around at the end of the road and headed back to lend a hand - by pulling in behind the stranded car with his emergency lights on, and waiting patiently until the police arrived.

The electrics had failed in the car in front meaning even the hazard lights would not work.

The driver said: "I would very much like to pass on my huge thanks to him for being there and having the compassion to stop when no one else did. I have much respect for your company if this is the calibre of person you employ. Thank you!"

Russ said that if it was his wife whose car had failed, he would like to think someone would stop to help her.

Suttles presented Russ with some Love To Shop vouchers for his kindness. Great work, Russ!

Instagram

Can't get enough **Quarries** and **Projects** photos and updates? Follow **@suttles_group** on **Instagram** for more.

Parliamentary Review

Earlier this year, former Tory MP **Lord Eric Pickles** invited MD **Joe Paine** to write a 1,200 word article about **Suttle Stone Quarries** for the 2019/2020 **Parliamentary Review**.

The publication gives private and public sector organisations a chance to share and promote their best practice among policy makers and business leaders, with the goal of raising standards.

In September, Joe and **Suttles** chairman, **Chris Suttle**, were in-



Praised: (l-r) Russ Bartlett collects his vouchers from Simon Clabburn

vited to attend a canapes and champagne reception at the **Palace of Westminster** in London, to celebrate the publication of the review.

The reception was attended by the Father of the House, **Kenneth Clarke MP**, journalist and TV presenter **Andrew Neil** and journalist, **LBC** presenter and **Question Time** regular **Julia Hartley-Brewer**.

Joe said: "Chris and I really enjoyed this interesting event."

"The Parliamentary Review has been an opportunity to put the Suttle group in the eyeline of key national decision and policy makers."

"The event was a fun way to meet some protagonists and commentators on the current upheaval in our national politics."

If you would like a copy of the Parliamentary Review please contact **Projects** office co-ordinator **Steph Lamb**.



Reception: Joe Paine (right) with Ken Clarke, flanked by Andrew Neil (top)

American History (Purb)ecks

A HISTORIC transatlantic connection linking **Virginia, USA** to the **Isle of Purbeck** was revealed after **California Quarry** received a special order for stone flooring.

Philip Ford, who is originally from the UK and moved to Virginia with his wife over 20 years ago, contacted **Suttles** after seeking a renovation for his local church - the Glebe Episcopal, built in 1738.

With a mandate to update the place of worship while being sensitive to its history, Philip said he and his church committee agreed stone from Purbeck was the natural choice.

Many churches along the East Coast had Purbeck stone aisles, thought to be a result of tobacco and cotton ships travelling between the area and the UK in the late 1600s.

After another notable historic building in Virginia, the mansion

at the Corotoman plantation, burned down in a fire, research on exposed fossils in the flooring found it was built using Purbeck stone.

Mr Ford said Suttles were the only UK company he contacted who were interested in the job and willing to assist with his enquiry. After numerous emails and calls about the stone itself and the job of transporting it to the US, Philip flew over to the UK with his wife for a tour of the quarry and to get an insight in the production of the stone on site.

The church arranged the shipping and collection of the stone, which was carried out with plastic pallets (instead of the usual wooden ones - which would have been more time consuming and costly) and the stone arrived at its transatlantic destination with without a scratch.

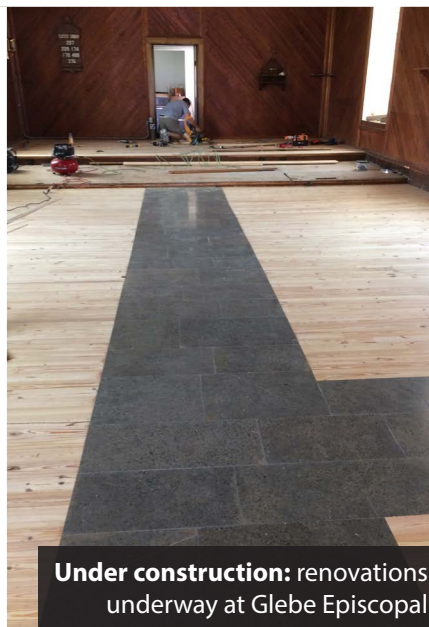
Quarry manager, **Nick Crocker**,

said: "I am delighted that Philip Ford and his team contacted Suttles when they were looking to



refurbish the church and install a new floor in the nave and transept.

"Given the location's historical significance, I was captivated from the very first contact. Purbeck stone was shipped across the Atlantic to Norfolk, Virginia by the founding fathers in the 17th century. I am honoured that we have been able to do so again in the 21st century."



Under construction: renovations underway at Glebe Episcopal

