

Suttle Standard

Raising the standards in safety, health, environment and quality | newsletter@suttles.co.uk



Web: www.suttles.co.uk
Tel: 01929 439444



Twitter.com/Suttle_Stone
and /Suttle_Projects



Facebook.com/SuttleProjects
and /SuttleProjects

Keeping On Track



Stabilised: more than 80m of sheet piles were required

Beaulieu Road, New Forest

Project: Sheet piling and earthworks for reinforcement works at railway embankment

Client: Osborne

FOLLOWING a landslide at a railway embankment in the New Forest, **Projects** was commissioned to provide reinforcement works. The stretch of line, near Beaulieu Road station, had been subject to an Emergency Speed Restriction and is located at a Site of Special Scientific Interest. (Cont'd [p3](#))



Tee time: (l-r) Mr Lawrenson signed a football as he spoke to director Joe Paine; practise shots at Purbeck; in the bunker



Suttle Golf Day

FOOTBALL pundit and former Republic of Ireland and Liverpool player, **Mark Lawrenson**, was the guest speaker at the annual golf day. He spoke of his time as a defender (Cont'd [p3](#))

The view ahead

WELCOME to the first edition of the **Suttle Standard** since **Suttle Projects** successfully achieved ISO international standards in Health and Safety, Environmental and Quality Management. As we move into a new financial year, all aspects of the **Suttles** group are seeking to build on a very promising and successful 2018-19. In line with current events, Suttles continue to prioritise innovation and sustainability, with electric cars, improved recycling, and refined waste management plans all at the forefront of our thinking this Summer. In this issue, you'll find updates on major accreditations we've gained including from wide-ranging ISO and FORS audits, as well as from our latest projects including investigatory groyne works at Hengistbury Head near Bournemouth, new walls at Exeter Hospital and Poole Quay, our recent health and safety updates, and much more.



Caption competition: Mark Lawrenson

CONTENTS



Bird's Eye View
Drone stills from our latest project



Know Your Colleague
Who's dribbling this hockey ball?



Health and safety
Mental health, PPE and more starts on page 6

Editorial team

Editorial and design - Adam Parker
H&S content - James Wilmshurst
Additional content - Tom Paine, Tracey Paine, John Suttle, Liam Tucker

Suttles is J Suttle Transport Ltd and Suttle Projects Ltd. www.suttles.co.uk
Stone experts and civil engineers. Buy straight from source or commission us for complex projects.
Registered office: Swanworth Quarry, Worth Matravers, Swanage, Dorset, BH19 3LE.



Keeping On Track (continued from front)

The earthworks component of the project began in January, and required the creation of an access road to ensure the surrounding landscape was not damaged during the works.

The team started by making a road out of a PH neutral material (70/30 granite). In the end, around 6,000 tonnes of material was delivered to the site. The biggest challenge was mobilising in time for railway line possession, because the stone suppliers were unable to supply until the last minute.

Over the course of the weekend line possessions, **Projects** installed more than 130 sheet piles ranging from 10m-12m in length. Further works aimed at improving drainage at the site will commence in November. Temporary drainage methods in use currently include weep holes.

Projects acted on behalf of **Osborne** for this

job and used a Movax SG75 vibratory piling hammer to pitch and install the sheet piles, ABI TM14-17 leader rig to drive the piles to depth. The works completed in mid-May.

Site manager, **Jordan Roberts**, said: "The job progressed well – it took longer than we expected, although this was due to additional works being added by **Network Rail**."

Suttle Golf Day (continued from front)

during the '70s and '80s, and gave a candid account of life both on and off the pitch, during which time he rubbed shoulders with notorious players like former Liverpool goalkeeper, **Bruce Grobbelaar**, who he recalled opening bottles of beer with his eye socket on the team bus after matches.

On the course, Mr Lawrenson played on director Joe Paine's team and enjoyed the sprawling and picturesque Isle of Purbeck Golf Club course.



Top team: (l-r) sales manager **Dave Penney**, **Luke Lucas** (Lucas Developments), Mr Lawrenson, **Spencer France** (S R France Contractors), **John Armour** (Absolute Armour & Sons)



NEW DIRECTORS

TWO new directors were appointed in April.

New commercial director **John Harley** started in June 2013 as a graduate civil engineer and chose to specialise in the commercial aspects of the business.

He said: "I am proud to be a beneficiary of **Projects**' commitment to promotion from within.

"My gratitude is not only for my recent promotion, but the countless opportunities I have been afforded to develop myself alongside the company over the last six years."

Matt Suttle said: "I am thrilled to achieve this appointment as a director of **Quarries**. It has been an ambition of mine for a long time and I feel enormous

pride in representing my family's business at director level. I'd like to thank the Board of Directors for the appointment and also my colleagues who have supported me and taught me great lessons during my time at **Suttles**."



POSITIVE DRIVING: JAMIE TREW

A BIG congratulations to **Jamie Trew** (pictured above left with **Eden Cole**) at Mannings Heath Road Depot, who was noticed by a member of the public for driving a **Suttles** van with exceptional pro-



New directors: John Harley and Matt Suttle

fessionalism. Our large sign-written fleet of vehicles is always noticed by the public, so positive driving is great for *Suttles'* image.

BAUMA 2019

MUNICH-based construction machinery trade fair *Bauma* is held every three years and lasts for seven days.

Attracting over 600,000 visitors, the fair showcases the latest construction machinery, building material machines, mining machines and construction equipment.

This April saw technical and contracts directors **Alistair Maidman** and **Liam Tucker** spend a day at the event. Obviously, there was a chance to sample some splendid German beer, but more importantly, the trip gave Ali and Liam an opportunity to find out about the latest innovations in equipment, to help them plan ahead for *Projects'* fleet.

With around 3,700 exhibitors it was also an

ideal venue to network and meet up with companies we have worked with previously, including our Finnish friends from *Movax*.

After having walked approximately 18,000 steps around the indoor and outdoor arenas covering 614,000m², Ali treated himself to a 1:50 scale die-cast model of a Bauer BG40 piling rig, which now has pride of place next to his desk at Dawkins Road Industrial Estate, Poole.

COMMUTER HELL MADE EASIER

IN A bid to improve on diverse issues ranging from sustainability, carbon footprint and workplace stress, IT manager, **Adam Parker**, has elected to commute by rail daily between his home in the New Forest and his office at *Projects'* Dawkins Road site in Hamworthy.

Adam's journey had become particularly stressful with continually rising levels of traf-



Top racers: (l-r) Will Paine, Roger Funnell, Joe Paine

fic across Christchurch, Bournemouth and Poole.

Adam said: "This change has made my work day so much more pleasant. I save more than 30 minutes each way because I'm not tearing my hair out in traffic jams, and the journey can be used so much more positively to enjoy reading or social media."

MHR NEW SCREENER

Mannings Heath Depot has recently acquired a brand new screener. The *Colt 300* is a lot like the existing

screener at MHR, however is smaller and used specifically for crushing and crushed concrete production.

The addition has made the process much better and of higher quality in many ways. One positive is it makes the job of picking on the track stack a lot easier and much more efficient, as the Colt screens out all the small fines. This generally makes our recycled products of a much higher quality.

GO KARTING AND POOLE DOG RACING

RATHER than the usual Christmas party, *Suttles* staff were offered a night out in February at either *Poole Greyhound Stadium* or the *Wessex Raceway*.

Tracey Paine chose a night out at the dogs and said: "Even though I tried a number of betting tactics - favourite name, cutest dog, cutest handler, tipster's tip - I managed to lose every single race! Still, it was



Bauma: (l-r) Ali dwarfed by some machinery, the all-electric 8 wheeled Volvo, a massive vibratory EMV

fun trying and the meal was nice. Judging by the cheers coming from **Gordon Parr** and **Eden Cole's** table, a few rows up, they fared much better."

The go-karting night brought out the competitive spirit in its entrants.

This year's champion was commercial director, **Roger Funnell**, with managing director, **Joe Paine**, taking second and **Will Paine** came in third.

Thanks to Lauren for organising both of these social events.

TRAINING AT SUTTLES

Undergraduate **Jake Danson** has been working at **Projects** since July 2018 on a year-long placement, while studying Civil Engineering at the **University of Bath**. We asked him about his time at **Suttles**.

How many projects have you been involved with since working at Suttles?

There have been at least 10 different

projects, with varying degrees of involvement. The main projects I have been involved with include: Poole Quay Bal-last Wall, Bedfordshire Scour Bridge Monitoring and Skinner's Bridge Bearing Pile design.

What has been your favourite aspect of your job?

I have found doing the design work very interesting and challenging. Also, I have especially enjoyed setting out on site as well as tendering for new work.

How has your time at Suttles Projects helped you?

I have been able to apply the things that I have learnt at university, but also being able to visit construction sites and learning about various construction methods and the associated plant has been useful as it is difficult to learn these things inside a classroom.

What do you think of working at Suttles?

I have enjoyed working here. I really like this company and I am pleased that I chose to



Community asset: (l-r) John and Matt Suttle inspected the Corfe Castle Village Hall extension

come here.

CORFE CASTLE VILLAGE HALL

Suttles supplied stone and made a £2,000 donation to a village hall extension scheme at Corfe Castle.

Director, **Matt Suttle**, said: "**California Quarry** were thrilled to be supplying **Corfe Castle Village Hall** with stone for the recent renovation and extension work.

"Being part of a community-led project in a village that is so close to home is always a great bonus when supplying stone."

The requirement in building stone was around 40 tonnes of cropped walling stone and a dozen naturally split face lintols.

The completed extension has added to the community resource,

allowing for more activities and classes to be held at the site.

Matt added: "The guys laying the stone have done a fantastic job and the end result is very pleasing."

LONDON CITY AIRPORT

London City Airport is an international airport located in the Royal Docks in Newham, approximately seven miles east of London.

It has a single 1,500 metre runway and operates 120,000 aircraft movements per year

However, new facilities and infrastructure are required to respond to a predicted increase in passenger numbers and to enable the airport to accommodate new generation aircraft.

Due to the airport's constrained (Cont'd p7)



On site: Undergraduate **Jake Danson** has enjoyed his time at Suttles

Health & Safety



Be proactive.

To report a close call contact closecalls@suttles.co.uk

Mental Health First Aid

In recent years, there has been a call from all areas of society to change the way we view and deal with mental health issues. This is particularly relevant in the workplace. At **Suttles**, we recognise that mental health education empowers people to care for themselves and others by reducing stigma through understanding. In an effort to break down barriers to the support that people may need, a handful of **Suttles** employees attended mental health first aid training.

Quarry manager, **Nick Crocker**, who attended the training course, said: "I think the biggest lesson from the course is a wider one than just mental health. "All supervisors and managers need to communicate better on a personal level with their

fellow workers. Not to just shout orders and instructions, but to find out on a personal level how everyone is doing and listen to what they have to say."

This training coincided with May's instalment of our **Suttles SHEQ Calendar**.

'Time to talk' focused on mental health and provided advice on how to become mentally healthy.

Mental health first aid training has proven to have had a positive impact at **Suttles** - we aim to do more in the future.



PPE

Over the last few months we have had 28 close calls submitted, these vary in range from no hi-vis, gloves to safety glasses. This was highlighted in an alert recently where an oper-



TOOL BOX TALK PPE

Personal Protective Equipment (PPE)

PPE is defined as equipment which is intended to be worn or held by a person at work which protects them against risks to their health and safety.

It includes, but not limited too:

- Safety helmets
- Gloves
- Eye protection
- High visibility clothing
- Safety footwear
- Safety harnesses.
- Face masks
- Hearing Protection

PPE must be used when health and safety risks cannot be controlled in other ways.



Hard hat



Eye protection



Guidance: The PPE Tool Box Talk

ative took off his safety glasses whilst breaking concrete and a projectile made its way into his eye. Luckily this was a minor incident and after washing his eye out there wasn't any damage. This could have been a lot worse.

There are around 9,000 PPE-related accidents are reported each year, this costs the industry £252m annual costs for PPE-related accidents.

The Importance of Personal Protective Equipment

PPE is equipment that will protect workers against health or safety risks on the job. The purpose is to reduce employee exposure to hazards when engineering and administrative controls are not feasible or effective to reduce these risks to accept-

able levels. We recently issued a toolbox talk for PPE.

Environmental

Spill bins were being used incorrectly, the bins were used for storage of materials/clips, in one of the bins a liquid was stored with rags which could have been a combustible. Ironically a fire extinguisher was in the bin with them. The spill bins also had water within them and were empty of any spill cleaning materials. Learning points where:

1. Check all spill containers and ensure they are replenished.
2. Segregate liquids from combustible materials. COSHH materials should be stored within a COSHH bin/container and the relevant



COSHH sheet available with all materials.

3. Do not use spill bins for storage of any materials other than spill equipment.

4. Check bins regularly for holes or water which is inside.

5. Ensure the lids always remain shut when not in use.

Spill kits and bins should be checked weekly, if you require contents information please contact the office. This should be recorded weekly.

Dust

Construction dust is not just a nuisance – it can seriously damage your health. Regularly breathing in these dusts over a long time can cause life-changing lung diseases.

Dust is tiny, dry particles in the air and can be produced when materials are cut, drilled, de-

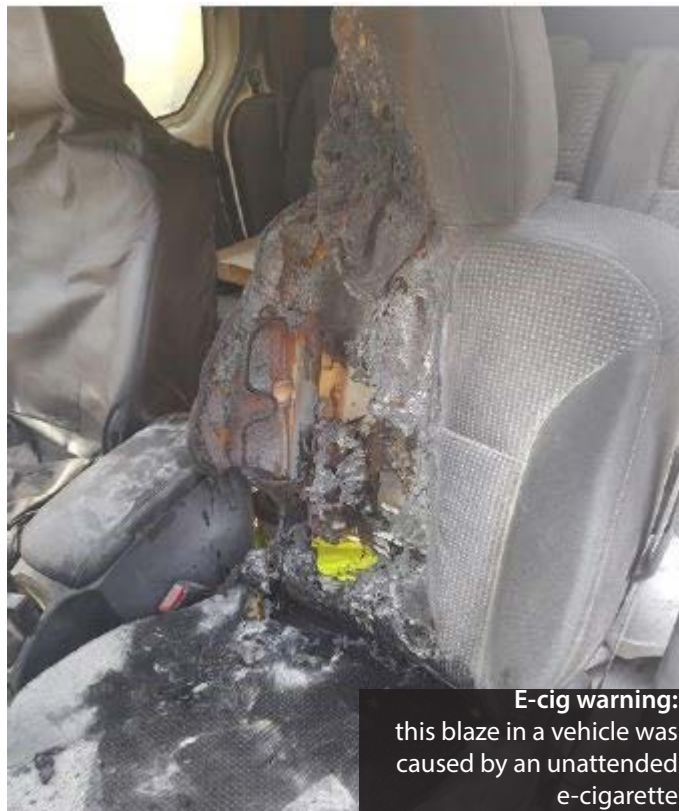
molished, sanded, shovelled, etc. This means many work activities can create dust. Dust is not always an obvious health hazard as the particles which cause the most damage are often invisible to the naked eye and the health effects of exposure can take many years to develop.

The HSE are carrying out random inspections across the UK, is your site prepared? If advice is required please contact **Liam Tucker**.

External SHEQ: E-Cigarettes

An E-Cigarette, left unattended in a company vehicle, could have caused a major incident after it spontaneously combusted while the car was parked on a petrol station forecourt.

The incident, which destroyed a car seat, occurred whilst the driver



E-cig warning: this blaze in a vehicle was caused by an unattended e-cigarette

was paying for his fuel, and the fire took hold within minutes.

Thankfully the prompt actions of the driver resulted in the fire being extinguished without harm.

E-Cigs and Vapes can cause fires which can very quickly lead to incidents of major damage

and serious injury.

Such devices have been known to be the primary source of fires even when not in use due to a failure of the wiring within them.

Do not leave E-Cigs or Vapes unattended in company vehicles!



London City Airport (continued from p5)

dockside location, it needs to extend eastwards and reconfigure existing parts of the airport. As part of these works, **Suttle Piling** have been employed to design a retaining structure and a bespoke fabricated propping system, and to also install the sheet piles to retain an oil separator tank, valve chamber and pre-cast culvert sections.

This work should **Suttle Standard**

take about four weeks and will involve staff working nights and weekends. Working airside, with the runway adjacent to the works, means that all of the equipment, including two **Movax** piling rigs, needs to be removed from the site at the end of every shift.

BOURNEMOUTH BEACH

The two-year project to deconstruct 12 groynes and replace

them with 12 new ones at Bournemouth Beach concluded in March, ahead of schedule.

Site manager, **Ashley Cameron**, said: "The project was delivered to schedule, without any safety issues, and to Bournemouth Borough Council's (now **Bournemouth Christchurch and Poole Council**) requirements.

"The second year of the works ran a lot more smoothly after gaining experience from the first six months on the job.

"More work was given to us off the back of this successful project - at Long Groyne, Hengistbury Head, which has also required renewal."

He added: "We all enjoyed working down at Bournemouth Beach as a team, and look forward to working alongside BCP again."

HENGISTBURY HEAD

Projects are helping to undertake investigatory works to (Cont'd p8)

Jake Danson Undergraduate Engineer Suttle Projects

As noted elsewhere in this newsletter, **Jake Danson** has been working at **Suttles** on a year-long placement from the **University of Bath**. He was inspired to be a civil engineer by his dad, who is an aerospace engineer. "Having an interest in

buildings, and enjoying maths and physics, I looked into civil engineering and found it really interesting," he said. However, when he isn't studying and working, one of his main interests is playing hockey – and he plays as a centre back in the first team of Poole Hockey Club.

"We've had a good season in the Hampshire and Surrey second division and were just one point away from second place and getting promoted." Jake has been playing hockey since he

was 10-years-old and moved into playing men's hockey when he was 13.

"My dad used to play hockey and my twin sister, Emily, and I used to watch him until he felt we were old enough to play ourselves". Emily, who is studying Business Management at Leeds Uni, also plays.

Jake grew up in a market town called **Biggleswade**, in Bedfordshire, where he played for the Shefford and Sandy Hockey Club.

"I still meet up with them when I can to play in the odd friendly match," he added.

For the uninitiated, the hockey season runs from the end of September to mid-April, with matches being played on Saturday afternoons. "We are now in the summer league, which consists

of a weekly evening game. This helps keep the team together and helps keep fitness levels high." Matches used to last 70 minutes, but international rules, brought in two years ago, are finally being taken up at national level, and matches will now last 60 minutes and take place over four quarters of 15 minutes. Jake said that the GB national hockey teams are doing really well in the league at the moment, with the women's team in 4th place and the men's team in 3rd. When he goes back to Bath in September, Jake will be the new Vice-Captain of the University Team and will also be playing for the Bath Buccaneers Hockey Club at the week-ends.

Tracey Paine



establish the condition of a major groyne at **Hengistbury Head**, near Bournemouth.

Long Groyne, originally built in 1938 and renovated in the early '90s, plays a significant role in the coastal defences of the area - without it, the coastline would be severely affected by longshore drift and erosion.

Bournemouth Christchurch and Poole Council (BCP), and its predecessors, have wanted to thoroughly review the performance of the

groyne - an action that has not been taken since before the Second World War.

The investigative works require the removal of all rock armour in sections to allow the sub-contracted surveying company to introduce a piece of survey equipment into the sea for critical analysis of the existing concrete core's condition.

Working closely with BCP, **Projects** have liaised with students from a local University, who have taken a keen interest in

the biodiversity of the marine life - especially that attached to the rock.

Once the required data sets have been collated, the groyne will be put back in its original condition, and the project will be left with BCP and its nominated design consultant.

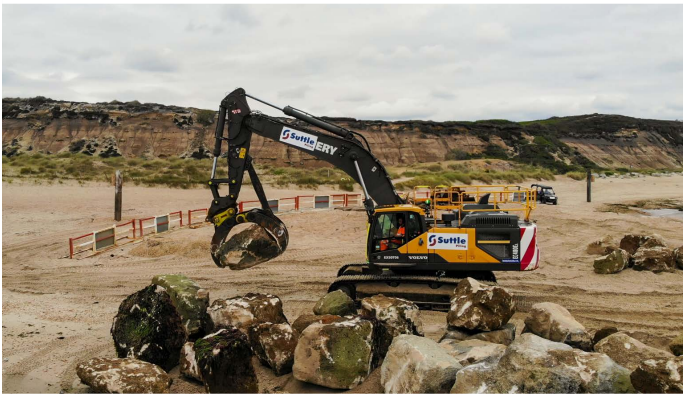
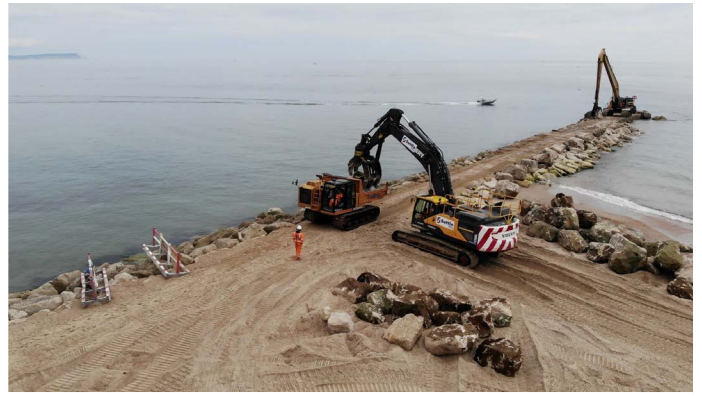
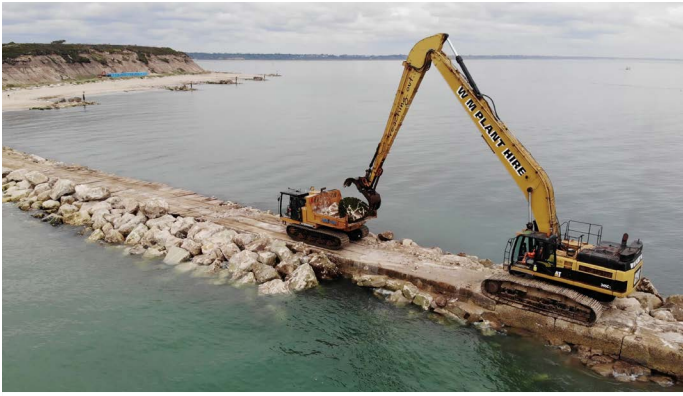
ISO AUDIT

Projects' management systems are now accredited to ISO standards 9001:2015, 14001:2015 and

45001:2018. The culmination of months of preparation was a five-day process of interviews and system interrogation conducted by two auditors and verified by UKAS-accredited awarding body **NQA**.

The process found that the company meets the internationally recognised standards for Quality, Environment and Occupational Health and Safety respectively.

Achieving the accreditation is one of the main steps that required



Hengisbury Head Long Groyne from above: (clockwise from top left) the CAT 345 long reach excavator lifting a boulder; the full site; site operative **Phil Cork** controlling a **Morooka MST 2200** tracked dumper; a 48 tonne Volvo excavator



ISO standard: (l-r) Liam Tucker, John Suttle and James Wilmshurst

completing before the company applies for a 'Principal Contractors Licence' with **Network Rail**.

Director, **John Suttle**, said: "The audit process was quite gruelling, and because of delays by other auditors, it ended up being in amongst four other accreditation audits that we have also successfully passed.

"I think the timing made for quite a stressful few weeks for every-

one involved.

"Ultimately it is an incredible achievement that we should all be very proud of. Maintaining and improving our standards is the next challenge, and I'm confident that we have the right team of people to do this."

PRINCIPAL CONTRACTORS LICENSE FOR RAILWAY Projects' management systems have been

audited and approved so the company can now tender for **Network Rail** Principal Contractor opportunities.

Director, **Liam Tucker** said: "On successful completion of a tender, we will get our principal contractors license. It's been in the planning for 12 months.

"Thanks to all involved with the auditing process – it's taken a lot of time, effort and hard work. It's a massive

step in the company's future development and growth."

EXETER HOSPITAL NEW MRI UNIT

AN extension to **Exeter Hospital** required **Projects** to construct a retaining wall and aesthetic shield.

Around 80 linear metres of 7m and 8m piles were inserted into mudstone, which was pre-augured with a **Geax EK75**. Sheet piles (Cont'd p11)

Close Calls April 2019 - 35

I'm aware that some Close Calls are being spoken about without being followed up and written down. I would encourage everyone to fill out the form or send an email to the close call address (closecalls@suttles.co.uk). MHR was the top scoring site for the month. Highlights this month are:

- 13 close calls for PPE, please brief the importance of PPE to all staff
- 29% are deemed to be medium risk and 18% were risks to members of the public
- Dumper being driven too fast in quarry, moped being driven too fast and shovel being driven too fast. We should all obey the speed limits around sites
- Bad practice with the use of spill equipment, an alert was issued for this
- Operative completing welding activities within a container without appropriate Respiratory Protective Equipment (HSE guidance requires RPE at all times when welding now and Local Exhaust ventilation when indoors)
- Eight close calls were reported at 9am

Liam Tucker

Top Scores by Site

Mannings Heath	15
Swanworth Quarry	11
Dawkins Road	7
Long Groyne	1
On Road	1
April Total	35

Close Calls by Category

PPE	13
Dangerous Driving	7
Other (misc.)	4
Slip/Trip Hazard	3
Fall of Person	2
Equipment/Plant	1
Entrance/Access	1
Movement of Plant	1
Rupture of Container	1
Lifting Operations	1
Welding/Cutting Operations	1



were then installed by a 34-tonne **Doosan** with a **Movax SG75** grip.

The installation of a capping beam and wall for the new building will allow it to be lowered into the ground by about 2m, so that it will be less imposing in the surrounding area. The project took just over two weeks to complete and restrictions were in place on noise levels in the residential area.

Contracts manager, **James Walton**, said: "Despite featuring unexpectedly tough ground conditions, the guys prevailed and it ended up being quite a successful job."

POOLE QUAY

Following years of wear and tear, **Poole Harbour Commission-**

ers set out to replace a failing concrete wall around a materials store at **Poole Quay**.

Projects were instructed to demolish the existing wall, and reinforced the perimeter of the store, which is used to contain ballast and other materials delivered to the harbour.

The decision was made to use Legato blocks for the first time, which fit together like Lego, and can be put together quickly.

Project engineer, **Jake Danson**, said: "It was a really interesting project to work on and despite the challenges faced, the team came together to deliver the project really well."

Site manager, **Ash Cameron**, said: "Despite some initial teething

problems, the job was delivered successfully, ahead of schedule, and the client was very pleased."

HIGH STRUCTURE

Projects are undertaking works at High Bridge, West Sussex.

Selected by **I-Group** on behalf of **Balfour Beatty Highways** after the team completed two similar schemes successfully, on time, on budget and without any accidents.

The works at High Bridge consist of grouting crenulations in an existing culvert to facilitate the installation of Concrete Canvas, to allow the structure's design life to be extended for at least another 50 years.

The works are particularly difficult due to the culvert's length (around 70m), and a turn in the structure that makes visibility difficult, as well as the requirement for over-pumping the stream during the works.

Projects are undertaking all the works with their experienced site

team, in addition to the canvas works they will also be carrying out rust protection to the steel structure and installing **Suttle Purbeck Stone** for scour protection.

The works are due to be completed by the end of July.

NEW STARTERS

Quarries welcome **Russell Bartlett, Victor Bower and Ben Coles.**

Projects welcome site operatives **Lee Westwood, Tom Wake-man, procurement assistant Ryan Beechey,** and compliance assistant **Eleanor Cherrett.**

Welcome aboard!

CONGRATULATIONS ON THE NEW ARRIVALS!

LOADING shovel/weighbridge operative, **Matt Davis**, and his partner Hybrea, welcomed their new baby Jayden, who was born on April 18th.

Plant operator, **Sonny Jenn**, and his partner Maddison, welcomed their new baby Teddy, who was born on May

11th. We wish them all much happiness.



Poole Quay ballast store: (l-r) under construction and completed (photo from **Phil Armstrong** at **PHC**)

CONSTRUCTING BETTER HEALTH

Following national research and a government strategy for reducing the incidences of work-related ill-health, the construction industry now sets its own targets to reduce ill-health, recognising that the 'health' bit of health and safety was not being given the same attention as 'safety'.

Additionally, in line with the relevant standards, a person shall not be permitted to work in a safety critical environment or go on, or near, the railway line if their ill-health compromises their ability to undertake a task, and which would pose a significant risk to the health and safety of themselves and others.

In response to this, **Suttles** implemented Constructing Better Health medicals, and decided that all new employees should have a medical assessment within the first month of starting. These assessments take the form of a one to one meeting with a medical professional, who asks you about your general health and carries out a number of tests and exercises with you to establish your level of health. The medical professionals are fully trained and will be able to advise you of your results and, if required, will refer you to an Occupational Health Physician.

The results provide **Suttles** with baseline information that enables us to monitor the effects of our operations on our employees. It also allows us to create risk assessments and implement measures, where required, for certain individuals. This ensures that we place people at the correct sites, knowing that we aren't affecting their health and wellbeing.

All existing employees, including office staff, have been given medicals, and they will receive further CBH medicals every three years for ongoing monitoring.

Recognising that the health and wellbeing of our staff forms an important part of our business, **Suttles** have recently signed up to the Constructing Better Health scheme which reinforces our commitment. For more information visit www.cbh-scheme.com

If you are invited to attend a medical and you have any questions beforehand, please contact Trainee SHE & Contracts Assistant **James Wilmshurst**.

SWANAGE PIER

Director **Matt Suttle** went along to the opening of **Swanage Pier**

after its £2.2m revamp in April - which features beautiful new paving supplied by **Suttle Purbeck Stone's** California Quarry. The pier was opened by actor Timothy West.

DRIVER LIAISON

Driver **Darren 'Daz' Hambidge** has taken on the role of 'Driver Liaison Contact' for Quarries. Af



ter volunteering at the recent drivers' meeting and taking an active part in the recent 'Suttle Setting Standards' training sessions. Darren has begun communicating alerts and toolbox talks to his colleagues in an effort to provide more engagement with all parts of the business. The new position means

that Daz will have regular meetings and communications with management and other colleagues in a bid to involve all employees in improving health, safety, environment and quality matters.

Director Sue Marshall said: "We thought that we weren't getting enough of the drivers' point of view and so we asked for volunteers for a driver liaison position. Daz volunteered and is enthusiastic. I think it's important that management keep their finger on the pulse and by having regular meetings with Daz we'll be able to get direct feedback from him and his colleagues."

FORS

Both **Projects** and **Quarries** achieved Silver gradings in audits by the **Fleet Operators Recognition Scheme** (FORS). It proved more difficult than normal as FORS' standards changed halfway through the process. Thanks to all involved.



Peerless pier: **Matt Suttle** checked out the new installation at Swanage Pier